

People Domain



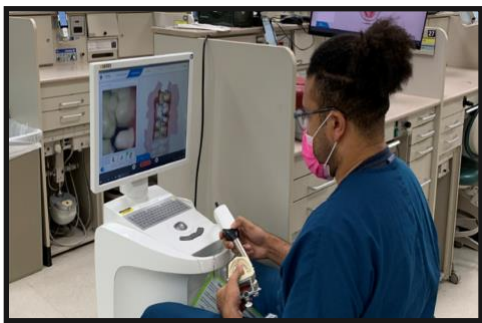
STEWARDS: Todd Ester, Natalie Brown and Rich Fetchiet

YEARLY ACHIEVEMENTS:

- Generated a \$250,000 outright gift.
- Generated two outright gifts for DEI scholarships – one for \$100,000 and another for \$250,000.

Education Domain

STEWARDS: Carlos González, Daniel Chiego

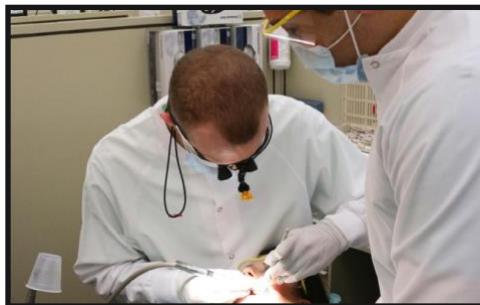


YEARLY ACHIEVEMENTS:

- Integration of case-based pedagogy using clinical scenarios with dental and medical significance in three courses.
- Increased the number of dental students participating in the Immersion Pathway doing basic science research from 3 to 8 students.
- Increase the number of selective courses to 22 that demonstrate integration of the basic sciences in the clinical setting allowing students a stronger capacity to diagnose and a greater armamentarium of treatment options.

Patient Care Domain

Stewards: Romesh Nalliah, Stephanie Munz and Cassandra Callaghan
Steve Stefanac and Brent Ward served as stewards for 6 months.

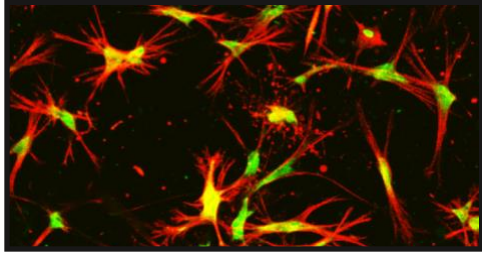


YEARLY ACHIEVEMENTS:

- Safely delivering emergency services to all patients during the statewide lockdowns related to COVID-19. 85% of the patients we treated were not patients of record.
- Carefully reopening to elective procedures and transitioning into new clinical spaces that were modified to better cope with the threat of COVID-19.
- Forming a Patient Advisory Board to help guide our decision making in the Office of Patient Services.

Research & Discovery Domain

STEWARDS: Vesa Kaartinen and Marco Bottino



YEARLY ACHIEVEMENTS:

- Three data sciences seminars were incorporated into the OHS seminar series.
- A plan to recognize collaborative projects as a part of the promotion package was developed and introduced to the faculty promotion portfolio.

Strategic Initiatives:

Dental Technologies Initiatives

STEWARDS: Gustavo Mendonça and Albert Chan;
Steve Sterlitz served as a steward until May 2021.



YEARLY ACHIEVEMENTS:

- Developed the initial curriculum plan for restorative dentistry and orthodontics incorporating the use of intraoral scanner for preclinical and clinical courses.
- Implemented intraoral scanners in preclinical and clinical education.
- Developed the initial plan to implement CAD/CAM with in-house manufacturing for preclinical courses and clinical activities.

Learning Health Systems Strategic Initiatives



STEWARDS: Romesh Nalliah until January 2020; Alexandre DaSilva 2020 – 2021

YEARLY ACHIEVEMENTS:

- Specialty clinics and DFA have increased the use of text messages for appointment reminders.
- Organize the first collaborative U-M Medical-Dental Learning Health Systems Conference – *Digital Transformation in Healthcare for a Diverse World*

Regenerative Medicine Initiatives

STEWARDS: Dave Kohn

YEARLY ACHIEVEMENTS:



- As the national center for regenerative medicine we support 14 projects from across the U.S. $\geq 90\%$ issued a patent/patent application, $\geq 80\%$ have had a FDA Submission, 100% have had corporate engagement.
- Published a paper that provides a roadmap developed by our center for translating technologies from academic labs.
- Created a gateway for regeneration medicine at UM, helping coalesce in investigators across campus, providing teams with tools to understand how cells organize in 3D.
- UM has become a member of the Advanced Regenerative Manufacturing Institute (ARMI)

New Clinical Education Model Initiatives



STEWARDS: Romesh Nalliah

YEARLY ACHIEVEMENTS:

- Pilot completed
- Faculty coaches identified and trained

Strategic Planning Committee:

Dean – Laurie McCauley

Chair – Lynn Johnson

BMSP – Sun-Yung Bak, CRSE - Rodgerio Maia, OMS/HD – Ron Aronovich, OPD – Rodney Vergotine

POM – Darlene Jones

Staff – Lynn Monson, Diane Thomas, Dinella Crosby, Stephanie Collins

Student – Samantha Sciancelepore, PhD Student – Malika Malik

Additional Information:

You can find additional details of the Strategic Plan online at: strategic-plan.squarespace.com

Ideas and feedback, please:

Because this Strategic Plan is a dynamic document, without the common 5-year or 10-year boundary, continual input from every corner of the School of Dentistry is vital. Strategic plan leaders encourage and value comments, suggestions and critiques of this initiative. Make your voice heard by contacting any of the stewards listed for each domain or initiative or send an e-mail to SPCommittee@umich.edu.

**Advancing Health through Education, Service,
Research and Discovery**